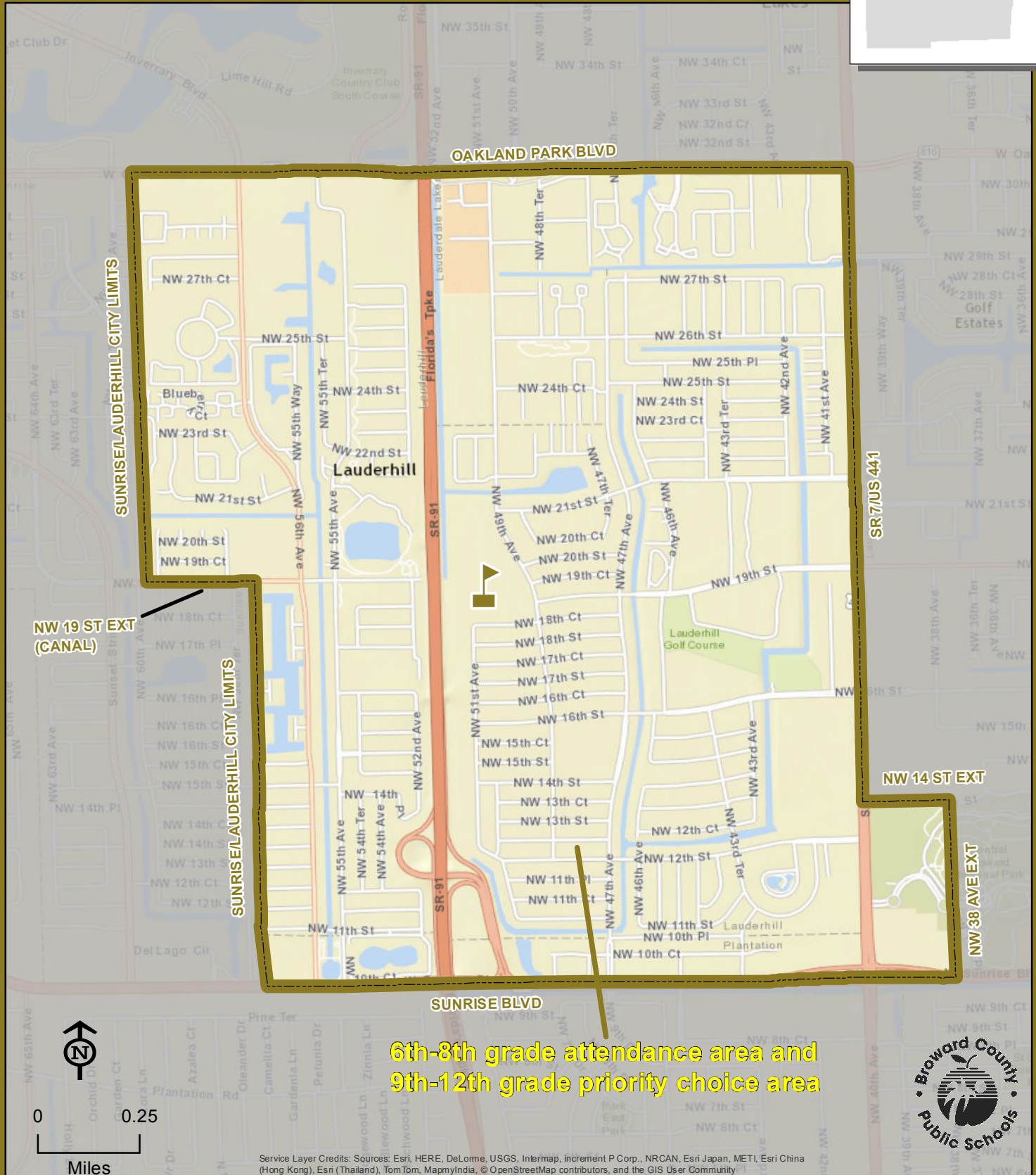


LAUDERHILL 6-12 SCHOOL

1901 NW 49 AVENUE
 LAUDERHILL, FLORIDA 33313
 754-322-3600

Magnet School



NW 19 ST EXT
 (CANAL)

SUNRISE/LAUDERHILL CITY LIMITS

SUNRISE/LAUDERHILL CITY LIMITS

SR 7/US 441

NW 14 ST EXT

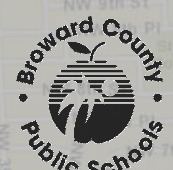
NW 38 AVE EXT

LAUDERHILL 6-12



6th-8th grade attendance area and
 9th-12th grade priority choice area

Service Layer Credits: Sources: Esri, HERE, DeLorme, USGS, Intermap, increment P Corp., NRCAN, Esri Japan, METI, Esri China (Hong Kong), Esri (Thailand), TomTom, MapmyIndia, © OpenStreetMap contributors, and the GIS User Community



THIS MAP IS FOR CONCEPTUAL PURPOSES ONLY AND SHOULD NOT BE USED FOR LEGAL BOUNDARY DETERMINATIONS